

EASE Scan Tool Software Installation and Interface Setup Instructions



Thank You for trying out the EASE Diagnostics Scan Tool!

Video install instructions to supplement these print instructions are available, if necessary, at www.fixcarsfaster.com. The videos are broken down into short discussions of the various aspects of software setup and operation.

Installing your EASE Scan Tool Software

ATTENTION: Close any other running applications, including anti-virus software. Also make sure there is no other EASE Versions running on the PC.

1. Go to the web address in the email you received from EASE when your purchase was made to begin the web download
(http://www.automotivescantool.com/download/pcst_pro_X3/pcst_pro_X3.exe)
Note: Disregard step 1 if you have already downloaded the web installer
2. Locate the install file (called: pcst_pro_X3.exe) in your download directory and run it
3. You may see a screen prompting you to uninstall a previous version. If so click “Next” and the Wizard will uninstall the previous version automatically. After the old version has been uninstalled the welcome screen will be displayed (**Figure 5**), click “Next” to continue.
4. This will bring up the License Agreement (**Figure 6**).
 - a. Please read the agreement carefully before checking the box to accept the terms
 - b. After checking the box to accept the terms click “Next” to continue.

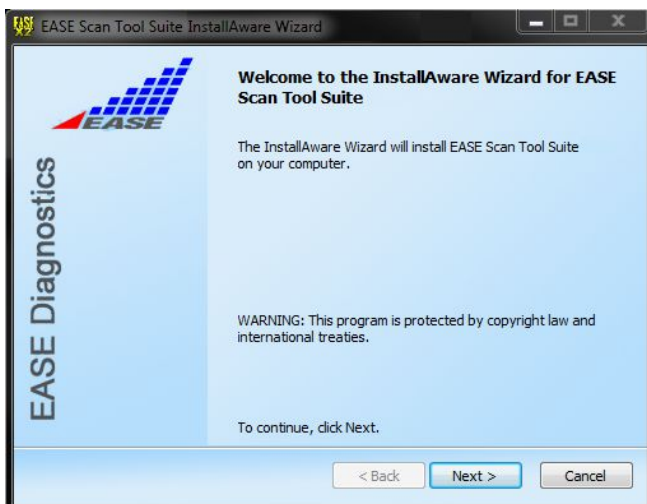


Figure 5

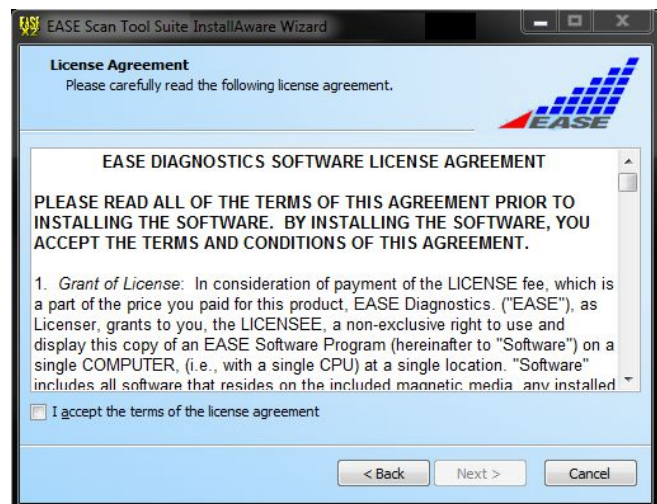


Figure 6

5. This will bring you to the “Setup Type” screen (**Figure 7**). Choose your preferred installation type:
 - a. “Complete” will install All the Scan Tools.
 - b. “Compact” will only install the Generic Scan Tool.

EASE Scan Tool Software Installation and Interface Setup Instructions



- c. “**Custom**” will let you choose what tools to install.
6. Then click “**Next**” (Figure 7)
7. On the Destination Folder screen. Click “**Next**” (Figure 8).

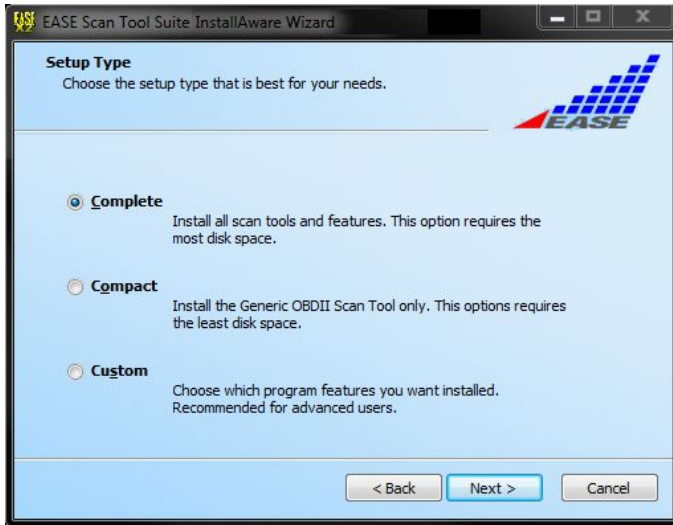


Figure 7

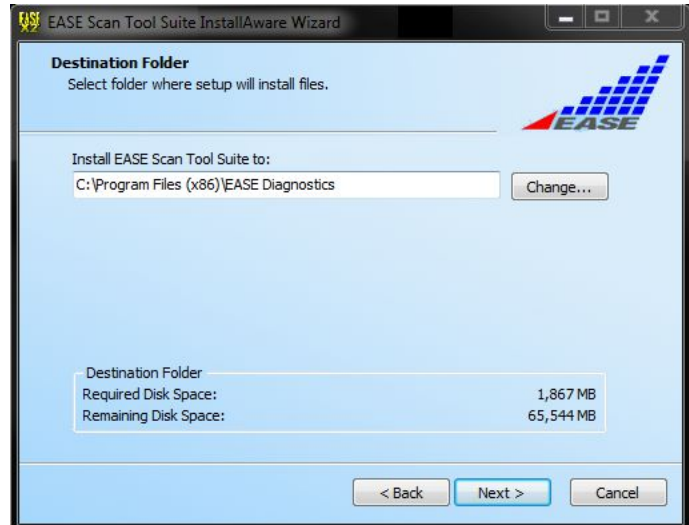


Figure 8

8. A confirmation screen will then be displayed (Figure 9). Review the information and make sure it is correct before proceeding. Click “**Next**” to continue and begin the installation.
9. Once the setup has begun, the “Status” screen will appear and show the installation progress. (Figure 10)

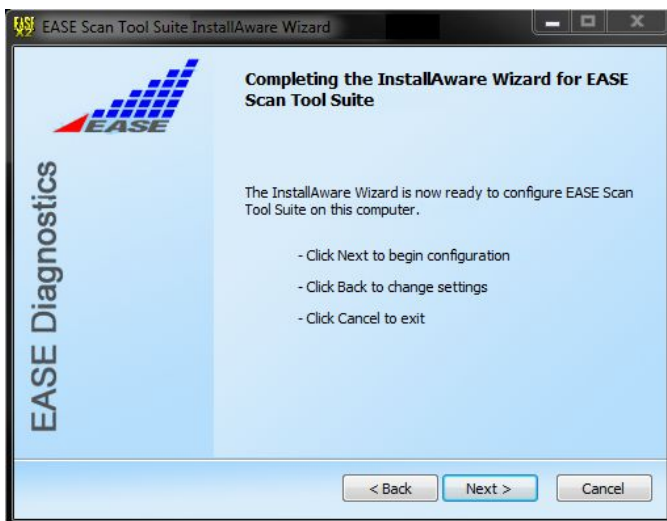


Figure 9

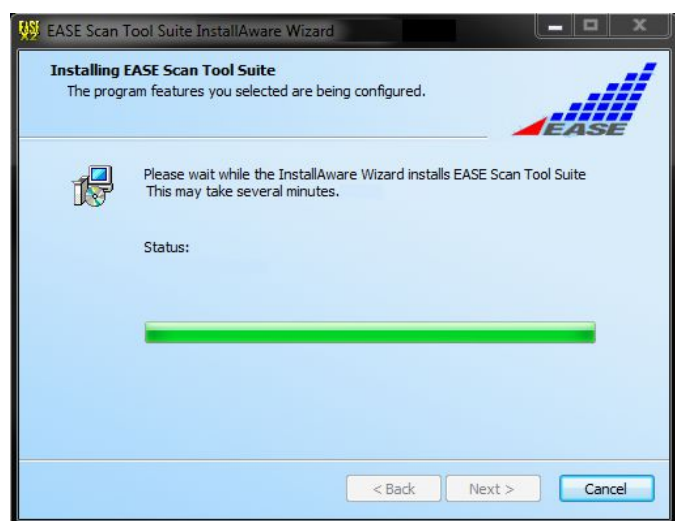


Figure 10

EASE Scan Tool Software Installation and Interface Setup Instructions



Note: If a previous version of the scan tool was installed on the PC, the “Data Migration Wizard” may be displayed. This will transfer your saved data from the previous version to the new version. Follow the directions on this wizard if you wish to transfer data. Otherwise it can be ignored by clicking “Cancel”

- Throughout the install process, you may see a dialog box similar to the following: **(Figure 11 or Figure 12)** If so, follow the directions below, under the box that appears on the screen.



Figure 11 –Windows 7 or later; Check the box next to Always Trust & click “Install”, so the software and USB drivers are installed. DO NOT PRESS ENTER as this will cancel the operation.

- When the installation is complete click “**Finish**”.
- If you have Internet on your PC the scan tool can check to see if there are any updates, be sure that it is enabled. This will ensure your scan tool is always up to date. Open the Generic or any of the O.E.M. scan tools and under the “Options” menu, select, “Automatically Check for Updates”.
- Your Scan Tool software is now set up
- If you turned off your virus checker prior to the installation, you can turn it back on now.